

OP End State II

AAR

SD ELEMENT: 8 man team supporting CDF

Element lead: Alfie

Element Asst. lead: Allan

Element Medic: Dave

Riflemen: Mike
Jonathan
Silk
Donato
AB

Engagement 01

1. SD element maneuvered to southern-most (SM) choke point
2. SD element established a defensive line at SM choke point

2.1 SD w/ BLUFOR reinforcements contained enemy assaults on SM choke point (30 minutes approx)

2.2 SD element coordinated with BLUFOR for counter-attack on enemy lines



HQ

1

BLUFOR ENY

BLUFOR ENY

BLUFOR ENY

2 ENY

BLUFOR ENY

HQ

3. SD element, with support of BLUFOR personnel, breached enemy's defensive line executing a frontal assault on enemy's positions

4. SD element, proceeded to bound SOUTH while engaging enemy forces in order to secure southern-most flank. Movement was conducted under heavy enemy fire and using point to point techniques

5. SD element assaulted enemy positions and established defensive line. SD pushed enemy back and repelled several enemy counter-attacks. Due to intense enemy counter-attacks, and little support from BLUFOR, SD suffered casualties and withdrew from defensive lines due to attrition

HQ



3



ENY

ENY

4

5

HQ

CONOP PICTURE

BLUFOR SITUATION AFTER FIRST SD
ENGAGEMENT APPROX 1100HRS

HQ

BLUFOR

ENY

BLUFOR

ENY

BLUFOR

ENY

BLUFOR

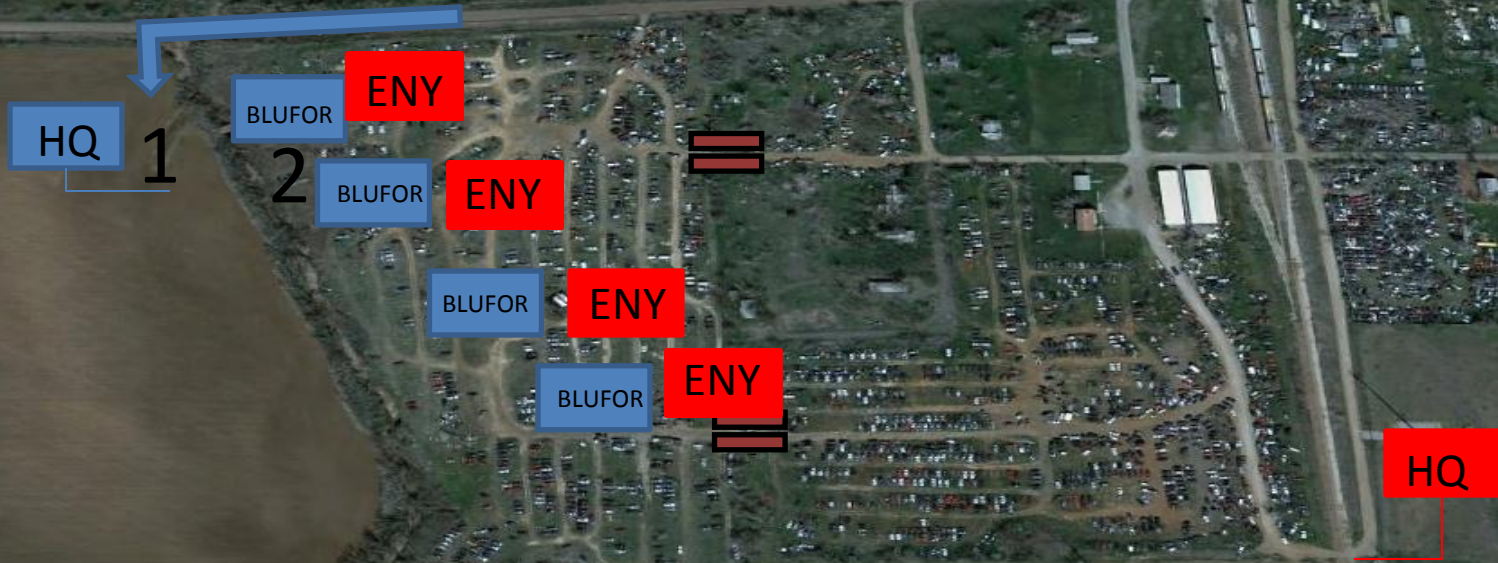
ENY

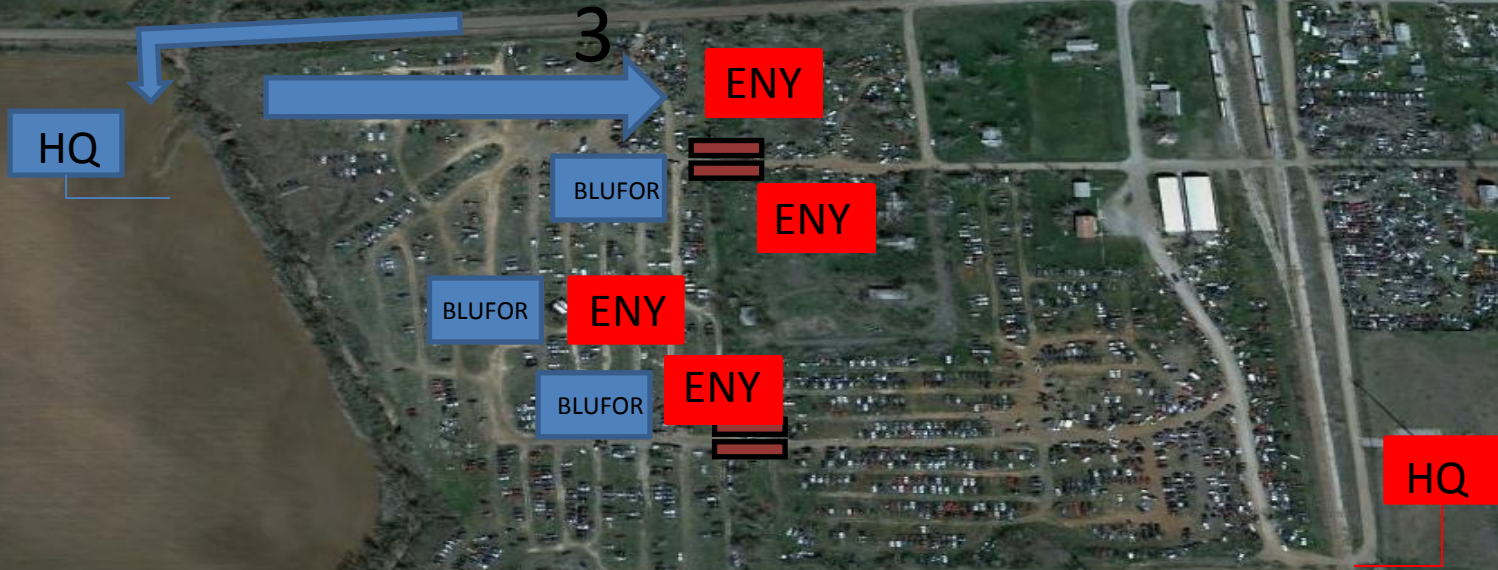
HQ



Engagement 02

1. SD element moved to BLUFOR HQ
2. Northern-most flank was being overrun by enemy forces
3. SD element maneuvered towards enemy forces and conducted frontal assault on northern-most enemy positions. SD was able to push back enemy attack and secure northern flank





4. SD element, with support of BLUFOR, established a defensive line along midway fence

5. SD element, with support of BLUFOR personnel, breached enemy's defensive line executing a frontal assault on enemy's positions

6. SD breach and assault was repelled by enemy; however, this maneuver provided enough motivation for BLUFOR to attack enemy lines along axis of advance

HQ

4

BLUFOR

ENY



5



6

ENY

BLUFOR

ENY

BLUFOR



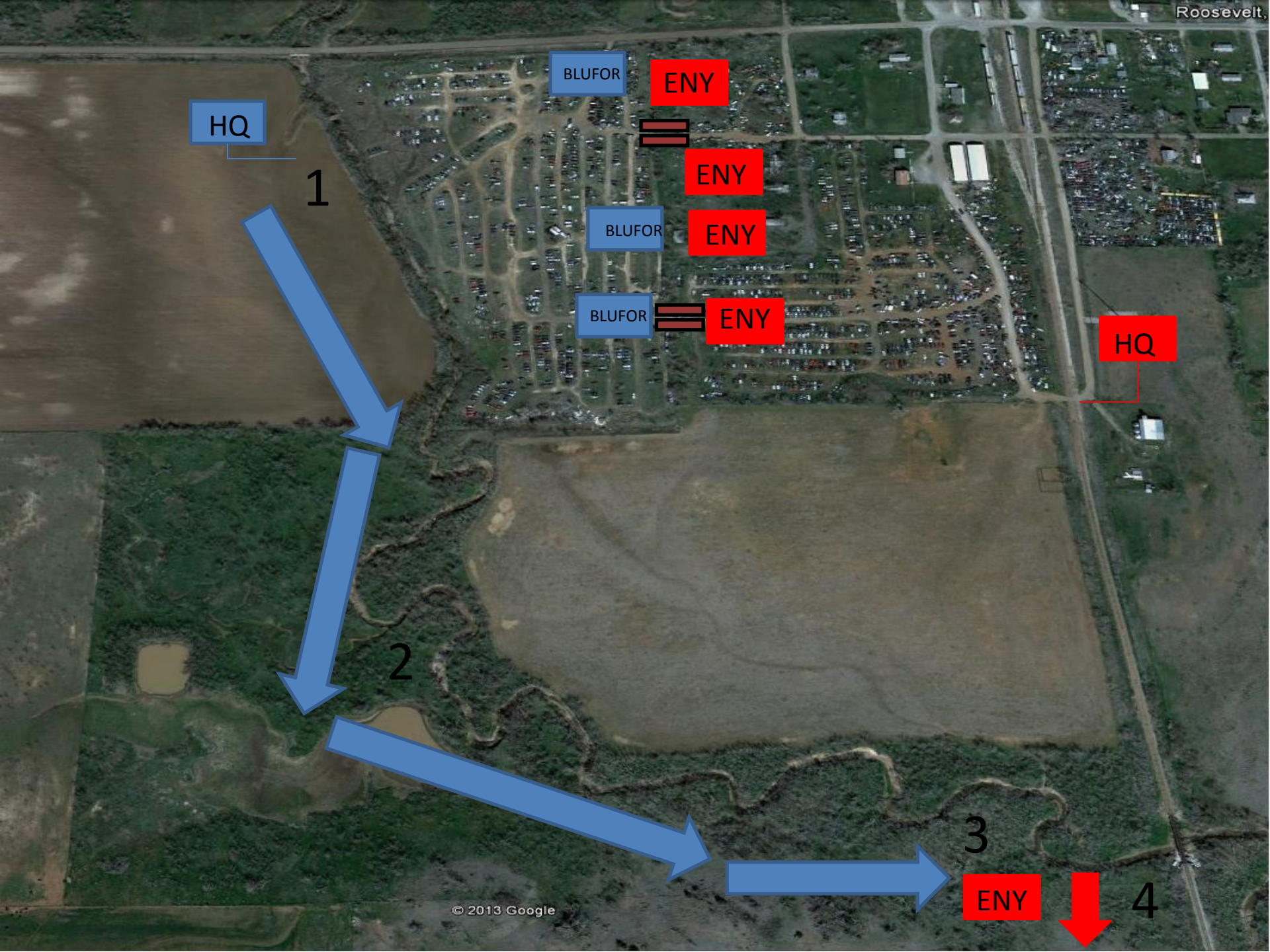
ENY

HQ



Engagement 03

1. SD element moved HQ
 - 1.1 No mission was given by HQ BLUFOR commander
 - 1.2 SD element decided to flank enemy positions and attack key installations on western side of AO
2. SD element conducted a movement to contact
3. TIC with enemy elements guarding an enemy HVT
4. Enemy element withdrew from contact towards hill



HQ

BLUFOR

ENY

1

ENY

BLUFOR

ENY

BLUFOR

ENY

HQ

2

3

ENY

4

5. SD element established an OP; enemy forces were observed, no contact was made IOT keep element of surprise
6. SD conducted a hasty ambush and eliminated approx 10 man enemy element (no casualties from SD side)
7. SD pursued fleeing remnants of enemy group and established positions to attack enemy HQ
 - 7.1 Attack on enemy HQ was denied by by blufor control element
 - 7.2 SD walked off the field IOT initiate preparations for return to home or record

HQ



HQ

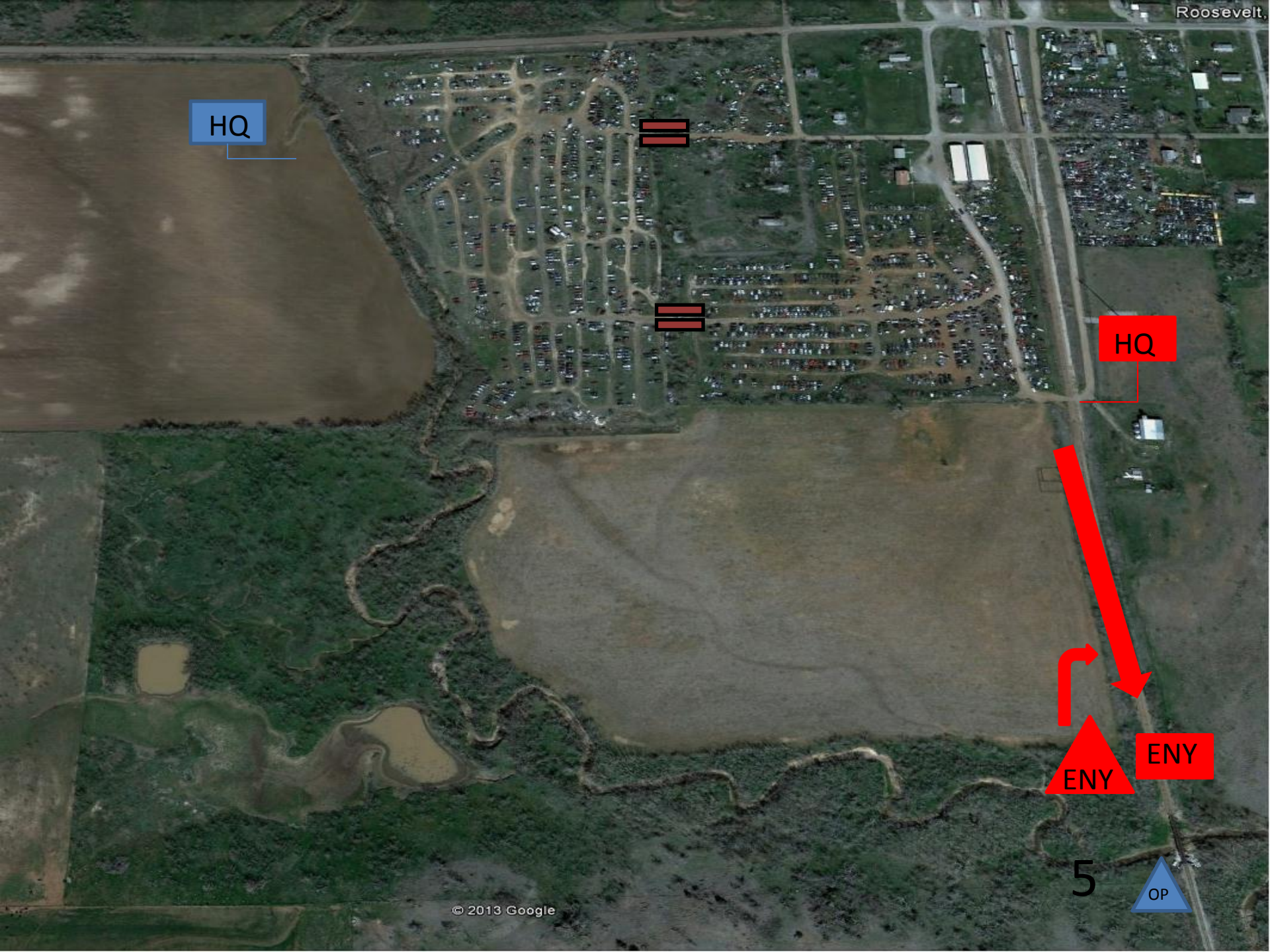


ENY

ENY

5

OP



HQ



HQ

6

ENY



HQ

BLUFOR

ENY



BLUFOR

ENY

BLUFOR



ENY

HQ

ENY

7

SD



4